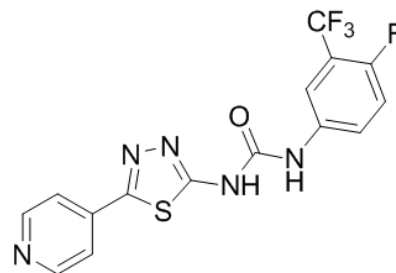


Product Name : ML216
Cat. No. : PC-42991
CAS No. : 1430213-30-1
Molecular Formula : C₁₅H₉F₄N₅OS
Molecular Weight : 383.3235
Target : DNA Repair Protein
Solubility : DMSO: 1.71 mg/mL



Biological Activity

ML216 (CID49852229) is a potent, selective inhibitor of DNA unwinding activity of **BLM** (Bloom's syndrome protein) with IC₅₀ of 2.98 and 0.97 μM for full length BLM and BLM636-1298, respectively.

ML216 weakly inhibits **WRN helicase** (IC₅₀=12.6 μM) and does not inhibit RecQ1, RecQ5 and UrvD (IC₅₀>50 μM).

ML216 disrupts BLM's binding to DNA, rather than being an inhibitor of ATP binding by BLM, the inhibition of ssDNA-dependent ATPase activity with K_i of 1.76 μM.

ML216 shows cell-based activity and can induce sister chromatid exchanges, enhance the toxicity of aphidicolin, and exert antiproliferative activity in cells expressing BLM.

References

Nguyen GH, et al. *Chem Biol*. 2013 Jan 24;20(1):55-62.

Rosenthal AS, et al. *Bioorg Med Chem Lett*. 2013 Oct 15;23(20):5660-6.

Caution: Product has not been fully validated for medical applications. Lab Use Only!

E-mail: tech@probechem.com